

GRABO®

Heavy Lifting Made Easy

Product Guide

NEW
GRABO
T-HANDLE





Contents

About GRABO	3
What is a GRABO?	4
Benefits of using the GRABO	5
Popular uses of the GRABO	6-7
GRABO PRO	8-9
GRABO PLUS	10-11
GRABO HIGH-FLOW	12-13
OTTOVAC by GRABO	14-15
GRABO SEALS	16-17
SEAL GUIDE	18-19
GRABO T-HANDLE	20-21
GRABO ACCESSORIES	22-25
GRABO IN THE FIELD	26-27
GRABO WARRANTY	28
SHOW US YOUR GRABO	29

About GRABO®



Today the GRABO is an indispensable tool for professionals in numerous industries, serving a vital role in hundreds of tasks. However, its origin story is rooted in a rock-climbing adventure.

The inventor of GRABO was on a quest for a more efficient way to ascend rocky surfaces, inspiring the creation of a powered vacuum tool specifically designed to securely 'Grab' onto uneven, slightly porous surfaces.

Although initially envisioned for rock climbing, the GRABO found a unique purpose - enabling the safe manual handling of a diverse range of materials in industries spanning from construction and transport to utilities and communications.



What is a GRABO® ?



The GRABO is a portable vacuum lifter that uses suction to lift and move heavy objects and materials.

It works by creating a strong suction between its foam seal and the object's surface, powered by a Lithium-Ion battery.

This versatile tool can lift up to 170 kilograms on various surfaces, including smooth, rough, semi-porous, and wet surfaces.

Some of the materials the GRABO can lift

- ✓ Concrete
- ✓ Metal
- ✓ Wood
- ✓ Glass
- ✓ Stone
- ✓ Plasterboard
- ✓ Tile
- ✓ Granite
- ✓ Pavers
- ✓ Natural Stone
- ✓ White Goods
- ✓ Furniture

What are the benefits of using the GRABO?

The GRABO enhances safety and efficiency in manual handling by minimising strain on the body, reducing the risk of sprains, tears, and repetitive lifting injuries. It promotes a better lifting position, enabling you to carry weight close to the body, near waist height, and lowers the risk of dropping heavy objects on fingers and toes, preventing serious injuries.

- ✓ Minimises strain on your body
- ✓ Supports a better lifting position
- ✓ Reduces risk of dropping heavy objects
- ✓ Helps prevent expensive material breakages
- ✓ Reduces finger injury by not handling material edges
- ✓ Increases overall job safety and efficiency

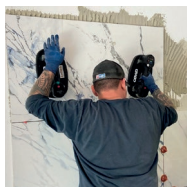


Popular uses of the GRABO®



Landscaping

Making slabs, pavers, sleepers easier to carry from the top meaning no more trapped fingers!



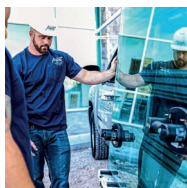
Tiling

Maximises productivity and minimises breakages through precise fitting and reducing physical workload.



Installers

Simplifies the positioning and installation of boilers and water tanks, making the process easier and faster.



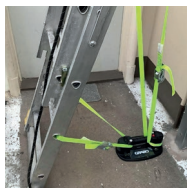
Glaziers

Provides secure window fitting with specialised seals designed for glass under 6mm.



Roofing and Cladding

Makes cladding and roofing tasks faster and safer.



Ladder Safety

The GRABO ladder anchor secures ladders without the need for fixings, making working at heights safer and simpler.



Utilities

Offers a fast and effortless method for removing drain and manhole covers. It also eliminates the need for breaking out slabs when digging.



Removals

Makes removals easier by essentially providing a handle for large, awkward white goods and furniture.



Construction & Infrastructure

Enhances team safety and efficiency on significant construction and infrastructure projects throughout the UK.

We can provide on-site demonstrations at major construction or infrastructure projects across the UK.

FIND OUT MORE ON PAGE 26



Check out our full range of supported materials.



Find out more



GRABO®

GRABO[®]

PRO



The GRABO Pro, our cutting-edge vacuum lifter with digital display and smart pressure sensor, that maintains the optimal pressure, activating or deactivating as needed. Engineered with a focus on ergonomics, it offers enhanced grip and minimises fatigue when dealing with heavy products and materials.

- ✓ Lifts products and materials up to 170KG
- ✓ Effective even on dusty, semi-porous or rough surfaces
- ✓ Smart pressure sensor automatically monitors and maintains optimum suction.
- ✓ Digital display shows maximum weight that can be safely lifted at any moment.
- ✓ Slimmer, ergonomic handle for better grip and less fatigue
- ✓ 1.5 Hour non-stop run time



GRABO®



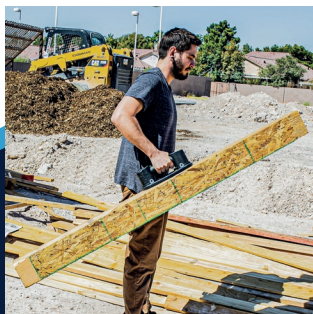
Find out more

GRABO[®] PLUS



Using the GRABO benefits anyone who lifts and moves large or heavy objects, whether it's pavers working with heavy stones, tilers making their job more efficient or removal companies moving awkward furniture. The original GRABO Plus gets the job done and gives you the same lifting capacity as the GRABO Pro but with manual controls.

- ✓ Lifts products and materials up to 170KG
- ✓ Effective vacuum lifter even for dusty, semi-porous or rough surfaces.
- ✓ Manual on/off button
- ✓ Classic 45mm diameter handle
- ✓ Rubber-protected mechanical pressure gauge
- ✓ 1.5 Hour non-stop running time





Find out more



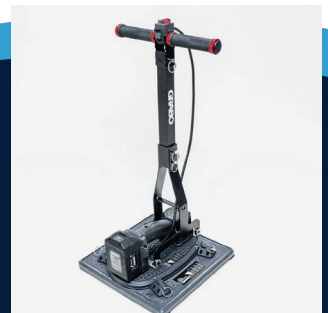
GRABO®

NEW GRABO[®] HIGH-FLOW



The NEW GRABO High-Flow represents cutting-edge tool innovation. Its revolutionary design incorporates a smart cut foam seal and a user-friendly T-handle, making material handling significantly easier and more ergonomic. Engineered for optimal efficiency, the GRABO High-Flow excels in managing challenging and highly porous materials, such as dry cast pavers and untreated MDF, providing a secure grip for safe handling.

- ✓ Lifts highly porous materials
- ✓ New smart cut square seal
- ✓ T-Handle Lifter Included
- ✓ New 5Ah Li-Ion battery
- ✓ Fits existing GRABO seals



GRABO



Find out more

OTTOVAC BY GRABO®



**Now includes
Rechargeable
Li-Ion Battery**



The OTTOVAC by GRABO is the go-to tool for moving glass and smooth materials like plastic, metal, painted wood, marble, and tiles. It comes with a Li-Ion rechargeable battery and standard AA battery inserts, all neatly packed in a tough hard case.

- ✓ Single button battery power, no need to finger pump to gain suction.
- ✓ Up to 1500 power-ups with gauge to indicate vacuum pressure
- ✓ Automatic on/off switch to maintain suitable suction while lifting.
- ✓ Perfect for glass, carries up to 100KG
- ✓ Standard & Li-Ion rechargeable battery packs (USB-C)



GRABO[®]

SEALS



STANDARD SEAL

The GRABO Standard Seal replacement for both GRABO Pro and GRABO Plus models. We recommend changing your GRABO seal at least every six months or sooner with heavy use.



ROCK SEAL

The GRABO Rock Seal is designed to make it easier to pick up rough materials such as rocks, stones or surfaces with variations in height up to 10mm.





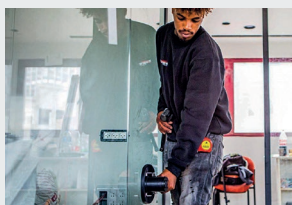
SLENDER SEAL

The distinctive design of the GRABO Slender Seal makes it very efficient at gripping extended, narrow surfaces like pavers, long tiles, pipes, cut-to-size benchtops, curb stones, and more.
















BRACE SEAL

The Brace Seal is an additional seal for the GRABO specifically designed for glass under 6mm and other thin materials.



With our range of seals your GRABO is the ultimate carrying tool.

SEAL GUIDE

Materials	Tiles	Concrete	Rock	Glass (6mm and over)
Seals				
 Standard Seal				
 Slender Seal				
 Rock Seal				
 Brace Seal				

Material densities and porosity can affect the GRABOs suction abilities, check pressure before use.



The seal will work with the material



Best seal for the job

Glass (Under 6mm)	Wood	Sheet Metal	Riven Materials	Pipe & Ducting >160mm dia
				
				
				
				



Find out more



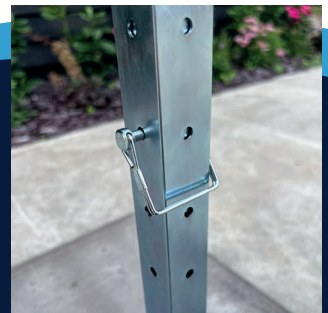
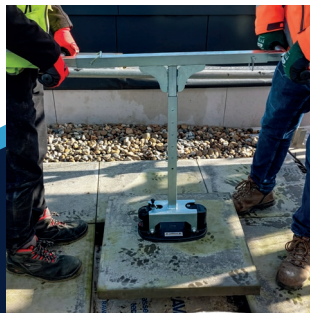
GRABO®

NEW GRABO[®] T-HANDLE



The T-Handle is an attachment for the GRABO that enhances safety and efficiency by streamlining the handling of bulky, weighty objects and materials. Ideal for landscapers, construction companies, utility firms, or anyone requiring secure handling of heavy items.

- ✓ Helps protect your back
- ✓ Ergonomic lifting for 1 to 2 people without bending.
- ✓ Weight Approx 6.5kg | Carrying capacity 120 kg.
- ✓ Works with both GRABO Plus & GRABO Pro
- ✓ Fully galvanised handle with foot-controlled release



GRABO®

GRABO



Find out more

GRABO® ACCESSORIES



ERGUO S1

The Erguo S1 GRABO attachment is designed to ensure the ergonomic operation of the GRABO, reducing the need for bending. The attachment seamlessly fits into the four lifting lugs positioned next to the grab handles of the tool. With a simple handlebar activation of the GRABO, you can effortlessly lift and position your materials.

NEW



REMOTE CONTROL

The Grabo Remote Control system is an optional product that allows a hands-free system for lifting and handling materials from a safe distance. This product is specifically designed for equipment that utilises multiple Grabos or positions the Grabo at a distance from the user.

GRABO[®]

ACCESSORIES



CHARGER

The replacement GRABO Battery Charger can be used with voltages from 100 to 240 volts at 50/60Hz. Includes multiple international adapters. (socket types A, C, I)



CARRY BAG

The GRABO Bag is made with rugged and water-resistant Oxford fabric, perfect to keep your GRABO tools and all necessary accessories in one place.



BATTERY

On a full charge, the GRABO Replacement Battery delivers up to 900 operating cycles or up to 1.5 hours of uninterrupted run time.



SWITCH PROTECTORS

The GRABO Pro/Plus Switch Protector is a removable silicone cover that helps protect your GRABO Pro/Plus switch from moisture and dirt.



Upgrade your GRABO with our range of GRABO Accessories!

GRABO[®]

IN THE FIELD

GRABO has played an integral role in enhancing workplace safety and efficiency for some of the UK's largest companies.



Partnering on numerous infrastructure and rail projects alongside Morgan Sindall, GRABO ensures safe and efficient manual handling tasks.

**MORGAN
SINDALL**



GRABO assists Sky engineers in minimising installation risks by enabling access to tight spaces with ease.

sky



GRABO helps ensure the safety of the Openreach field team while working at elevated positions, particularly when alternative anchor points are unavailable.

openreach



GRABO, coupled with the T-Handle, keeps manual handling safe on top of the new UK Google HQ.

 **Lindner PRATER**

Google



Contact us
for an on-site
demonstration.

GRABO[®]

WARRANTY



12 MONTH WARRANTY

WITH AN EXTRA 6 MONTHS WHEN
YOU REGISTER YOUR GRABO

At GRABO, we take great pride in the quality of our products. To ensure complete confidence, we offer a comprehensive 12-month manufacturer's warranty that begins from the date of purchase for all GRABO products.

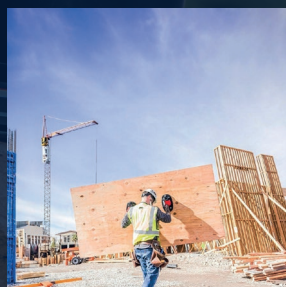
By registering your new GRABO online and subscribing to our newsletter, you can extend your warranty by an additional 6 months, making it a total of 18 months. Plus, as a subscriber, you'll be the first to receive updates on our latest products and exclusive offers.



Find out
more about
our GRABO
Extended
Warranty.

SHOW US YOUR GRABO®

We love seeing images and videos showcasing the GRABO in action! Tag @grabo_official in your posts to be highlighted on our pages and inspire others.



GRABO®

Heavy Lifting Made Easy



DISTRIBUTED BY

 **EXORDIA**
GLOBAL



 01245 961166

 info@thegrabo.co.uk

 thegrabo.co.uk